

FILTER REPLACEMENT INSTRUCTIONS FOR ACVRO1A/ACVRO35/ACVRO50**Filter Codes: ACV12-12**

It is very important to follow the procedures below, to ensure that your water system continues to function properly. Before attempting any maintenance on the reverse osmosis module, place a bowl (or tray) below it to prevent any water spillage.

Component	Approximate Capacity
Pre Filter – ACV12	Up to six months
Post Filter – ACV12	Up to six months
Membrane	One to three years (depending upon feed quality)

To carry out the filter change you will need: Bowl / tray, rubber gloves, scissors, sanitiser (we recommend the use of Aqua Dosa™ sanitising solution*).

Changing the Pre Filter

The pre filter is located in the housing that is fed by the red tubing from the saddle-tapping valve.

1. Isolate the feed water to the system by turning off the saddle-tapping valve (clockwise).
2. Turn off the pure water storage tank by rotating the valve, so it sits across the valve body.
3. Place the drinking water tap into the constant flow (lever up) position to de pressurise the post filter.
4. Wearing the rubber gloves, unscrew the lower of the two large black nuts by turning to the left until it disengages. The sump and nut will come away, take care not to lose the 'O' ring, which forms the seal.
5. Remove the filter cartridge by turning it to the left until the threads are cleared.
6. Clean and rinse out the inside of the filter sump and cleanse with a sanitising solution*.
7. After removing one of the new filters from the packaging (they are both the same filter), fit it into the head works by offering the threads to the head and winding the cartridge in a clockwise direction. *Do Not Over Tighten.*
8. Replace the sump / nut (ensure that the 'O' ring is in place).

Changing the Post Filter

The post filter feeds the drinking water tap and also has a tube running to/from the storage tank. Filter change procedure is the same as that for the pre filter.

9. Shut off the drinking water tap.
10. Open the storage tank valve.
11. Turn the feed water back on at the saddle valve.
12. Open the drinking water tap to 'flush away' any carbon fines from the post filter.

Recommendations

It is recommended that the storage tank is emptied at least once a month. It will take up to 6 hours to fully refill. Product water should be tested once or twice a year, to ensure that the membrane is removing impurities. This can be done by using a TDS tester (NDSM104) or by contacting your supplier. Spare parts are available from either your supplier or the manufacturer (please refer to the diagram / legend).

Aqua Cure plc, Aqua Cure House, Hall Street, Southport, PR9 0SE.
Tel: 01704 516 916, Fax: 01704 544 916. email: sales@aquacure.plc.uk

PARTS LISTING (ACVRO35/ACVRO50)



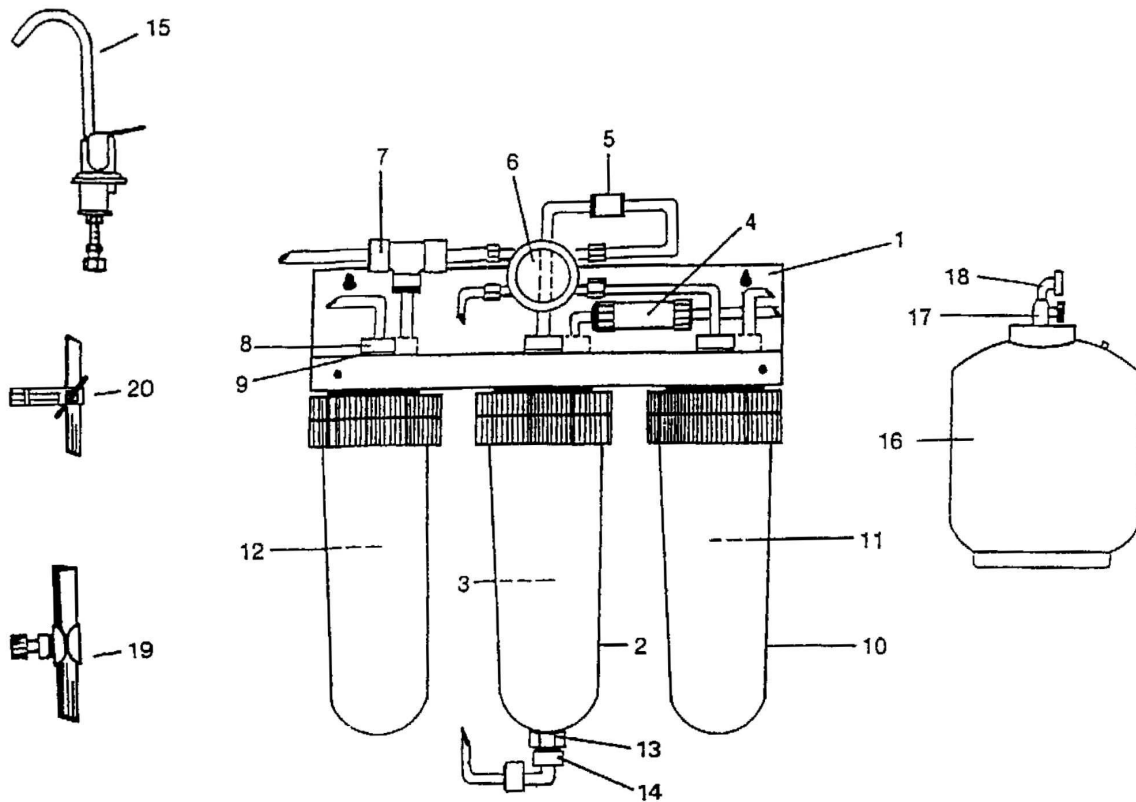
No.	Description	Part No.	No.	Description	Part No.
1.	Mounting Bracket	ACB32	13.	1/8" BSP x 1/4" Swivel Elbow	PI090801S
2.	Membrane Housing	ACROH10	14.	1/8" Dowty Seal (under 13)	ACW020
3.	Membrane (inside 2)	ACTFC50	15.	Chrome Drinking Water Faucet	ACLRF1
4.	Flow Control Restrictor	ACRFC550A	16.	2 Gallon Storage Reservoir	ACRES2
5.	Check Valve (Product)	ACCV8	17.	Reservoir Isolation Valve (NS)	PPSV500822W
6.	Auto Shut Off Valve (Hidden)	ACASV	18.	Drain Clamp Adapter/Saddle (NS)	ACRDC
7.	1/4" Push Fit Tee	PI0208S	19.	Saddle Valve	ACSVCV5A
8.	1/4" Push Fit x 1/4" BSP	PI010802S	20.	"O" Ring For Housing (inside 10)	ACW010
9.	1/4" Dowty Seal (under 8)	ACW019	21.	Membrane Housing Clip	ACB21
10.	10" White Filter Housing	ACV150W	22.	1/4" BSP x 1/4" Stem	PI050802S
11.	10" GAC Cartridge (inside 10)	ACV12	23.	1/4" Tubing	Red ACT141
12.	10" GAC Cartridge (inside 10)	ACV12			Blue ACT142
					Yellow ACT143
					Black ACT144
	NS= Not Shown				

FAULT FINDING

SYMPTOM	POSSIBLE CAUSES	CORRECTION
Lack of Product Water	1. Blocked Pre-filter 2. Low Water Pressure 3. Tank Exhausted	1. Change 2. Fit Booster Pump 3. Allow to refill
Tank heavy – No flow water from air valve.	1. Air charge lost from tank 2. Bladder ruptured	1. Inflate to 5 psi empty 2. Replace
Water never runs out	1. Membrane badly fitted or failed	1. Refit/replace
Water tastes 'off'	1. Old filters 2. Bacteria in tank	1. Replace 2. Sanitise
Black water after filter change	1. Carbon fines from filter	1. Quite normal – flush to clear - change

SHOULD NONE OF THE ABOVE RECTIFY A PROBLEM – CALL YOUR SUPPLIER

PARTS LISTING - ACVRO1A



Key No.	Description	Part no.
1	Mounting Bracket	ACVB4
2	10" Membrane Housing	ACV100WR01
3	Membrane – 5/7 GPD CTA (inside 2)	ACTFC15
4	Flow Control	ACRFC150
5	Check Valve /Non Return Valve Insert	ACCV1/ ACCV7
6	Auto Shut off Valve	ACASV
7	¼" Equal Tee	PI0208S
8	¼" x ¼" Push Fit Adaptor	PI050802S
9	¼" Dowty Seal	ACW019
10	10" White Cartridge Housing	ACV150W
11	GAC Cartridge – Post-Filter	ACV12
12	GAC Cartridge – Pre-Filter	ACV12
13	1/8" Dowty Seal	ACW020
14	¼" x 1/8" Elbow	PI090801S
15	Chrome Drinking Water Faucet	ACLRFT1
16	2 Gallon Reservoir	ACRES2
17	One-way Ball Valve	ACRBV
18	¼" x ¼" Push Fit Adaptor	PI010802S
19	Drain Clamp	ACRDC
20	Saddle Valve with Non-Return Valve	ACSVCV5